

YOUR HOLIDAY SAFETY GUIDE

Safety for the Home



Before you cook your holiday dinner, be sure that the oven and stove are free of grease and are in good working order.

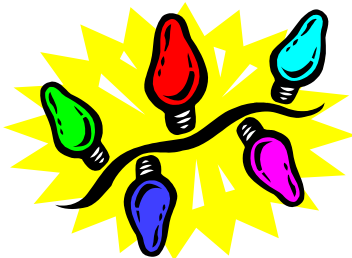
Handles on stove-top pots should be turned away from the front.

Have chimneys and fireplaces inspected by a professional to make sure it's clear of any obstructions. **NEVER** burn paper or trash in the fireplace.

Be sure your fireplace is covered with a metal screen or glass doors to prevent the spread of sparks.

Don't overload electrical outlets.

Don't leave candles burning or in areas where children or pets could knock them over.



Safety for the Tree

If your tree is purchased from a lot, test its freshness by pulling along a small branch. If needles fall into your hand, it's already too dry.

When the tree is decorated and inside your home, be sure that the stand can hold water. Check the water every day and add water as needed.



Artificial trees should bear a UL label of approval. Only purchase trees made of fire retardant materials.

Don't place the tree near sources of heat like radiators, registers, space heaters, or heating ducts.

Don't cut up and burn your tree in the fireplace. Evergreens give off tar and creosol which can ignite and cause a chimney fire.

Dispose of your tree according to Frederick County Landfill regulations. They will accept trees after the holidays.

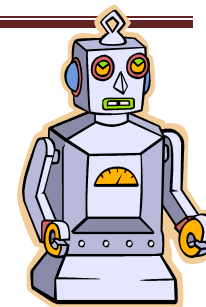


Safety for the Toys

Check all toys with electrical motors or lights to make sure they are UL approved or independently tested.

Make sure toys are made of non-flammable materials.

Only give toys that are age appropriate. Many manufacturers indicate an age range for toys. Watch for small parts that could cause small children to choke.



Remember...**matches and lighters are not toys! Keep them out of reach and out of sight.**

1. Be safety conscious while cooking in the kitchen.
2. Select safe and approved toys for children and teach them to keep away from candles, fireplaces, and heaters.
3. Make sure your tree is fresh and watered every day. Dispose of it in a safe manner.
4. Check all electrical wires, holiday lights, and decorations for damage or wear **AND...**



HAVE A SAFE AND HAPPY HOLIDAY SEASON!